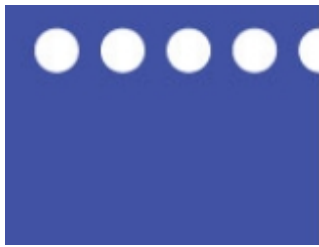


Tell Us What You Need! WI School Mental Health Framework and Trauma-Sensitive Schools Modules Available, Still Time to Register for Emergency Management Workshop



February 2016 Updates

This month's newsletter is also available:

www.wishschools.org/resources/newsletters.cfm

Visit Our Website



Tell Us What You Need!

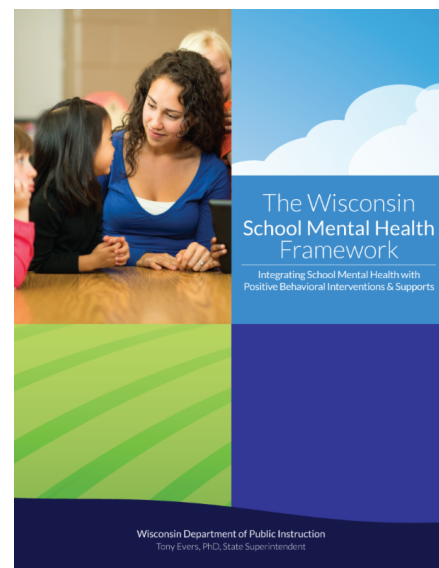
We are conducting our annual Safe & Healthy Schools Professional Development Survey. Please take 5 minutes to tell us what you need for training: [Survey Link](#)

Wisconsin School Mental Health Framework Available

The Wisconsin Department of Public Instruction has developed a School Mental Health Framework which provides guidance to districts on implementing a comprehensive school mental health system.

The School Mental Health Framework is designed to help schools better address the estimated one in five children and adolescents in Wisconsin who will experience a significant mental health issue during the course of their school career. These mental health issues can act as a barrier to school success, hindering a student's ability to reach their full academic potential. By addressing this barrier, schools can create an environment where students are more engaged in learning and are better prepared to enter the workforce or go to college after graduation.

The Wisconsin School Mental Health Framework is designed to easily integrate into existing multilevel systems of support (MLSS). Key elements of this framework include collaboration with community mental health providers, co-planning with families, and the creation of school improvement initiatives that focus on wellness and mental health. By incorporating mental health initiatives with MLSS, schools will be better equipped to promote social and emotional learning for all students, respond to student needs through effective interventions, and deepen collaborative relationships with families and community agencies. Read more and access



report: <http://dpi.wi.gov/sspw/mental-health>.



Readiness and Emergency Management for K-12 Schools

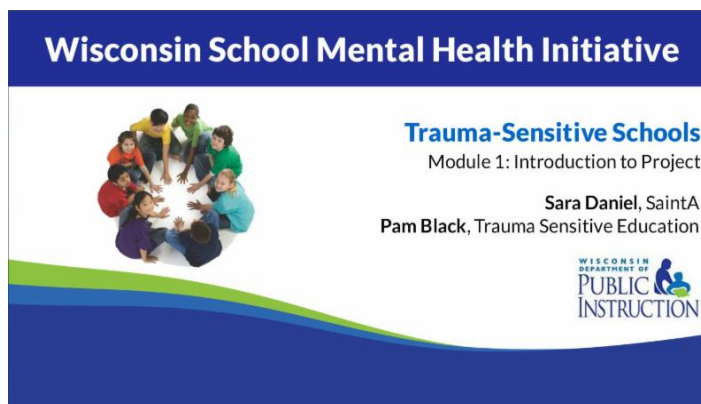
Two regional workshops will be held in March supporting schools in developing high quality emergency operation plans. Same content, you choose the location.

- March 1, 2016, Wintergreen Resort, Wisconsin Dells, [Link for more info](#)
- March 3, 2016, Metropolis Resort, Eau Claire, [Link for more info](#)

Topics include: Developing Emergency Operations Plans K-12, Breakout Sessions: Avoid Deny Defend, Safety with Social Media, Emergency Planning for Sporting Events (WI Dells), Overview of Restorative Practices (Eau Claire).

Trauma-Sensitive Schools Learning Modules

Please note: These learning modules are not designed for casual viewing by individuals in isolation of each other. Rather, they are primarily focused on school-based teams that have made a long-term commitment to a change process in their respective schools.



The Department of Public Instruction Trauma-Sensitive Schools (TSS) initiative is modeled after the Positive Behavioral Interventions and Supports (PBIS) school improvement process, focusing first on universal practices (Tier 1), followed by strategies for students who need additional support (Tier 2), and intensive interventions for students who require ongoing support (Tier 3). **The change effort within each school is best facilitated by a school-based team with an internal TSS coach who commits to additional professional development provided through these modules.** Implementation is enhanced when internal TSS coaches have access to technical assistance and on-going, problem-solving meetings facilitated by trained external TSS coaches.

Modules are available: <http://dpi.wi.gov/sspw/mental-health/trauma/modules>

For more information contact: Nic Dibble, nic.dibble@dpi.wi.gov

WISH Center Workshops

Please visit our [website calendar](#) often for updates and to register for events: www.wishschools.org.

**PREPaRE Crisis Prevention and Preparedness:
Comprehensive School Safety Planning (Open to all
school and community partners)**



Workshop 2: Focus on Crisis Intervention/Recovery

- [March 8-9, 2016, CESA #7, Green Bay*](#)
- [March 10-11, 2016, CESA #5, Portage*](#)
- [March 15-16, 2016, CESA #4, West Salem*](#)
- [April 28-29, 2016, Adams-Friendship School District*](#) (Open to all)

Readiness and Emergency Management for K-12 Schools

- [March 1, 2016, Wintergreen Resort, Wisconsin Dells](#)
- [March 3, 2016, Metropolis Resort, Eau Claire](#)

School-Based Suicide Prevention Training

- [April 20, 2016, CESA #1, Pewaukee](#)

NEW: Alcohol and Other Drug Basics Online Course

- [AODA Basics Online Course June 6-July 1, 2016*](#)

***Graduate Credit Available for fee through Viterbo University
All events are contingent on a minimum of participants.**

Wisconsin Safe & Healthy Schools Center | 608-786-4838 | www.wishschools.org

STAY CONNECTED:



[Forward this email](#)



This email was sent to therlitzke@cesa4.k12.wi.us by therlitzke@cesa4.k12.wi.us | [Update Profile/Email Address](#) | Rapid removal with [SafeUnsubscribe™](#) | [About our service provider.](#)



Try it FREE today.

Wisconsin Safe & Healthy Schools Center | 923 East Garland Street | West Salem | WI | 54669